



A light dusting of frost transforms scenery on Yachats River Road into an icy fairyland.

Photo © Ken Gagne

Simple Ways to \$ave

Wanting to trim your electric bills this time of year? Here's some ideas for cutting back on the kilowatt hours.

Save on Heating

- ⚡ For every 1 degree you lower your thermostat, you'll save about 3% on your heating costs.
- ⚡ Set your thermostat at 68°, or lower, to save, and use the lowest setting at which you feel comfortable.
- ⚡ Once you've set your thermostat while at home, leave it alone– constantly adjusting it costs you money.
- ⚡ Older thermostats are often inaccurate. Place a thermometer next to your thermostat to help you set it correctly.
- ⚡ At bedtime, or when you're away from home, set your thermostat to 55° or less. Also, turn the temperature down when you leave the house for longer than an hour.
- ⚡ Replace standard thermostats with heat-anticipating or electronic thermostats. Their accuracy is much greater, and they'll really save on your heating bill while increasing your comfort level.
- ⚡ Install automatic setback thermostats. They'll remember to turn the heat down at night, even if you forget. And they'll turn your heat back on in the morning so your home will be nice and warm as you wake up.
- ⚡ Move furniture at least one foot away from heat registers or baseboard heaters.

Analyze patterns in your electricity use by opening your free MyMeter page– go to clpud.org and click on "MyMeter" in the middle of your screen.

Want more energy-saving ideas? We've got plenty, from windows to water heating, lighting and more. Check out our website: clpud.org/simple-ways-to-save/



Energy-saving tips and latest news:

www.twitter.com/CLPUDinfo



Outage info: www.twitter.com/CLPUD

or report an outage at **1-866-484-3783**



Like us on Facebook at **Central Lincoln PUD**

Contact us at
info@clpud.org



My Electric Story



Teresa Kowalski and some of her kiln-fired glass art

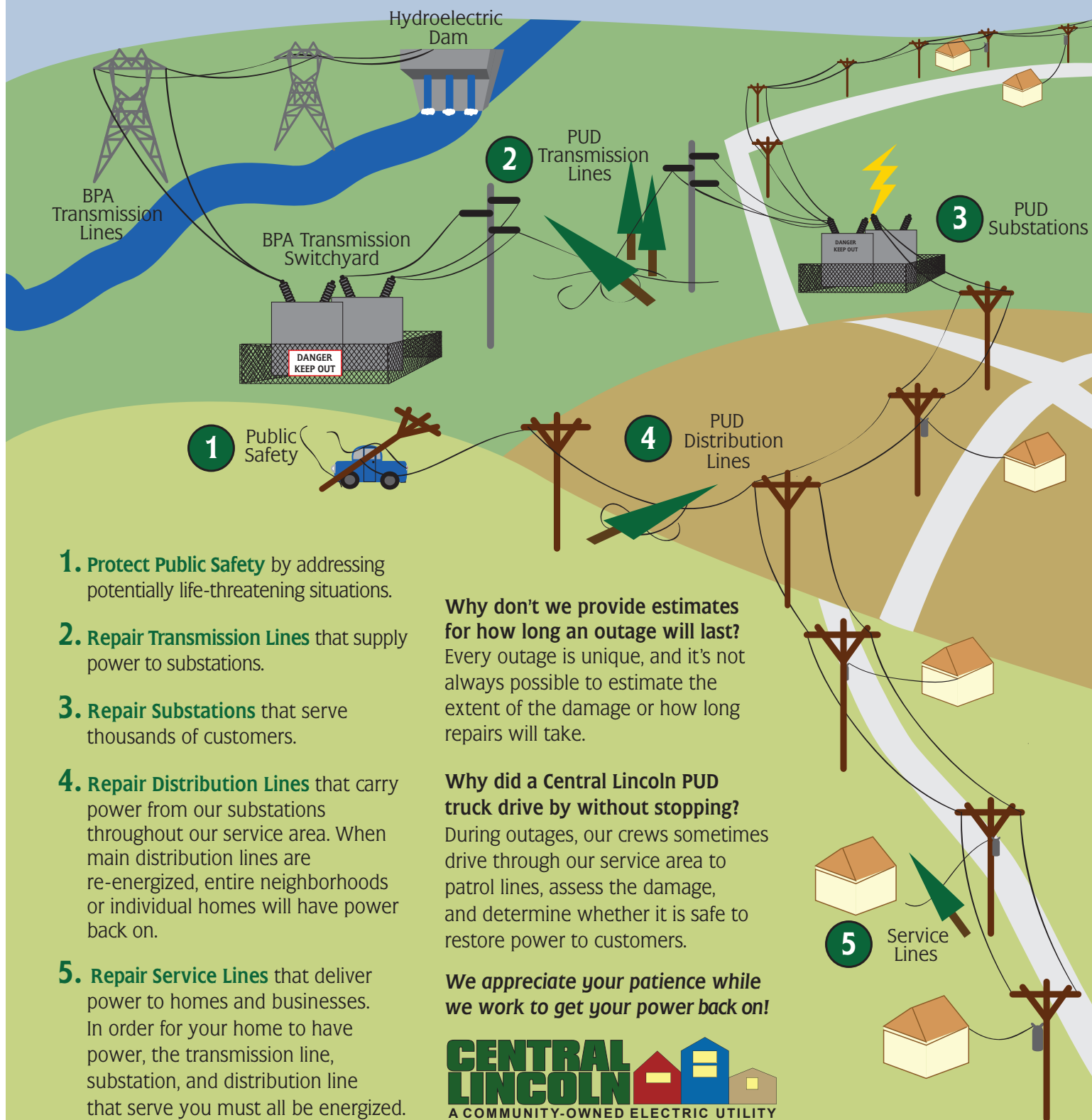
Featuring customers who use electricity in unusual ways.

Many glass artists on the Central Coast use fossil fuels to heat glass to 2,300 degrees. But lifelong artist Teresa Kowalski was drawn to "low fire"– glass melted at 1,500 degrees using a clean electric-powered kiln– after she happened upon a Portland studio fueling a renaissance in fused glass.

Thirty years later, she's still fired up about the art she's able to create by kiln, building on skills learned in ceramics. "I love working with a medium that has transparency, and reflects light. The colors are so vivid," she says shyly. "And I love to experiment with it!" The kiln at Kowalski Art Glass uses a simple 220 volt connection, but is large enough to fire pieces from Kowalski's students, as well as her own, all at once.

How We Get Power Back On

When an outage happens, we prioritize repairs in order to safely restore power to you as quickly as possible.



- 1. Protect Public Safety** by addressing potentially life-threatening situations.
- 2. Repair Transmission Lines** that supply power to substations.
- 3. Repair Substations** that serve thousands of customers.
- 4. Repair Distribution Lines** that carry power from our substations throughout our service area. When main distribution lines are re-energized, entire neighborhoods or individual homes will have power back on.
- 5. Repair Service Lines** that deliver power to homes and businesses. In order for your home to have power, the transmission line, substation, and distribution line that serve you must all be energized.

Why don't we provide estimates for how long an outage will last?

Every outage is unique, and it's not always possible to estimate the extent of the damage or how long repairs will take.

Why did a Central Lincoln PUD truck drive by without stopping?

During outages, our crews sometimes drive through our service area to patrol lines, assess the damage, and determine whether it is safe to restore power to customers.

We appreciate your patience while we work to get your power back on!

CENTRAL LINCOLN 
A COMMUNITY-OWNED ELECTRIC UTILITY